



September OPS Meeting to Feature Artist Kelli Folsom

Raised in the panhandle of Texas and southeastern Oklahoma, Kelli Folsom's love of creating art began as a young girl spending her free time drawing and copying other artist's work on the floor of her childhood bedroom.

"I always found drawing to be a source of peace and joy. It was not merely an enjoyable activity, but a place inside of myself that I could go anytime as long as I had pencil and paper."

The inspiration she received from her grandmother's paintings and drawings, as well as other artists, coupled with her inherent desire to create, planted a seed that would later lead her to studying art full-time.

Kelli received her B.F.A. from Lyme Academy College of Fine Arts in 2011. She has also studied at the Gage Academy of Seattle, WA and under artists Sherrie McGraw and Leah Lopez. In 2011 she was the recipient of the John F. and Anna Lee Stacey Scholarship through the National Cowboy and Western Heritage Museum in Oklahoma City. Kelli's passion for the old masters and the joy she takes from indepth life study strengthens her work as an emerging artist. Her greatest pleasure is being in the studio painting as well as sharing learning experiences with other artists.

"This is how I choose to understand and explore this life and I am gratefully rewarded in growth every day. I hope that others will be able to experience the beauty that I have perceived."



In This Issue

Desmond O'Hagen & Jude Tolar
Workshop Information – Page 6

President's Message – Page 2

Member Profile
Teresa Smith – Page 3

Message from OPS President Lindel Hutson

Greetings, and welcome to the 2015-16 season of the Oklahoma Pastel Society. I'm Lindel Hutson, your new president. I succeed Donna Branson, who steered this group so efficiently last year.

We already have an excellent lineup of artists who have agreed to demonstrate at our meetings, the second Monday of each month through May. There is no meeting in December.

I'm also happy to report that we have a verbal agreement with management at Northpark Mall in north Oklahoma City for a show and sale later this year. We're still working out the details, so stay tuned.

Local artist Kelli Folsom (www.kellifolsom.com) opens our year at the September 14 meeting. Kelli is one of the state's most gifted artists, and you can read more about her in this newsletter and on our website.

OPS is fortunate to have one of the best websites of any art organization: <http://www.okpastel.org/> This is thanks to the work of our web master, Becky Way.

Another favorite of local artists, Desmond O'Hagen (<http://www.desmondohagan.com>), returns to do a workshop Oct. 10-11. He will demonstrate for OPS at our meeting the Monday after the workshop. Desmond was here two years ago and his pastel cityscapes are some of the finest anywhere.

Nationally known portrait artist Mitsuno Reedy, recently returned to Oklahoma City from four years of art study at Studio Incammanati in Philadelphia, has agreed to do a demonstration in November.

For January, we hope to have a paint-along with Becky Way (www.beckyway.com). At the February meeting, OPS member Jude Tolar (www.judetolar.com) has agreed to do a demonstration, probably glass or flower painting.

We also hope for a return visit by Rick McClure (<http://rickmcclurefineart.com>), who last year offered such great tips on framing and show preparation.

I was surprised to find out this week that less than 20 members have paid their annual dues. We're not-for-profit, but we must sustain a treasury to continue the demonstrations and other basic functions. Please see Janie Schmitz and take care of your \$35 dues either before or at the September 14 meeting.

Something new: we are offering a \$10 membership for students. If you know students interested in art, please encourage them to take advantage of the educational opportunities offered at these meetings.

We look forward to seeing you at the meetings and the workshops. We do ask that you please leave other hobby and craft materials at home and give full attention — and plenty of space — to the artist. We've had some distractions in the past that we want to avoid in the future.

See you September 14!



Outgoing OPS president Donna Branson does a ceremonial turning over of the gavel to incoming president Lindel Hutson.



Spotlight on OPS Member Teresa Smith

I fell in love with pastels after attending my first OPS meeting approximately eight years ago. I had previously been working in watercolors under the tutelage of Oklahoma artist, Cletus Smith. I have to thank Anita Tackett for first introducing me to the Oklahoma Pastel Society and watching other artists doing demos with this particular medium. Further instruction from artists Becky Way and Mitzuno Reedy was a tremendous help in becoming more and more familiar with this exciting medium. I especially love the soft, brilliant colors that Terry Ludwig offers.

I started my serious adventure in art about 10 years ago, although I'd taken classes off and on over the past 40 years. I guess you could say I took a "sabbatical" from my art for about 20 years while raising my three very active children. But as soon as they were grown, educated, and gone, I began to pursue my art interests once again.

With pastels, I am mostly drawn to portraiture, mainly children and pets. I love figurative drawing as well, and I do a lot of still life. I've been fortunate enough to do a few commission portrait pieces, and have sold some of my artwork at various art shows. I don't really advertise. More word of mouth... As a friend once wisely said, "If I start advertising, it becomes a job. And no longer a hobby." Painting and drawing are strictly a hobby for me. A way to relax.

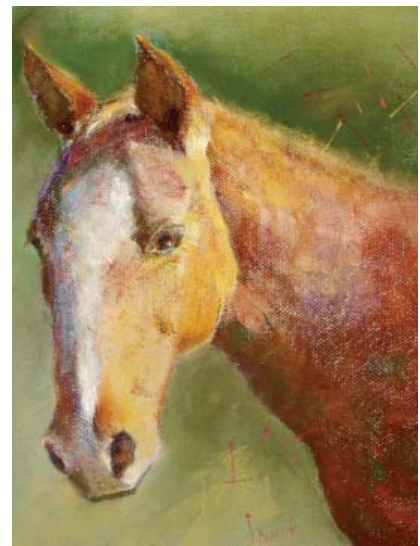
I was in the teaching profession before I married my husband, Mike, and have been a stay-at-home mom for the past 46 years. We currently live in Edmond. Mike is an oil and gas attorney and managing partner with Hall-Estill, Inc. in Oklahoma City. My "career", literally became my family. We have three grown children, Heather, Jake and Lindsay, and five grandchildren. Unfortunately, after all three kiddos graduated from college, their jobs and marriages took them out of state. Heather lives in Greenville, South Carolina; Jake lives in San Antonio, and Lindsay lives in St. Louis. Fun places for Mimi and Papa to visit!!!

Mike and I are both originally from Oklahoma, being born and raised in the small southwestern farming community of Hobart. Mike had graduated from West Point so our first 12 years of marriage were spent traveling with the military, but after his years of obligation were fulfilled, plus law school, we were drawn back to the Sooner State and Mike began his private practice with McNight-Gasaway in Enid. We lived there for almost 20 years before moving to Edmond in 2000.

My favorite artist is Mary Cassatt. I love her pastel paintings, most especially of mothers and children. I have two large prints of hers, framed



Aaron



Palomino

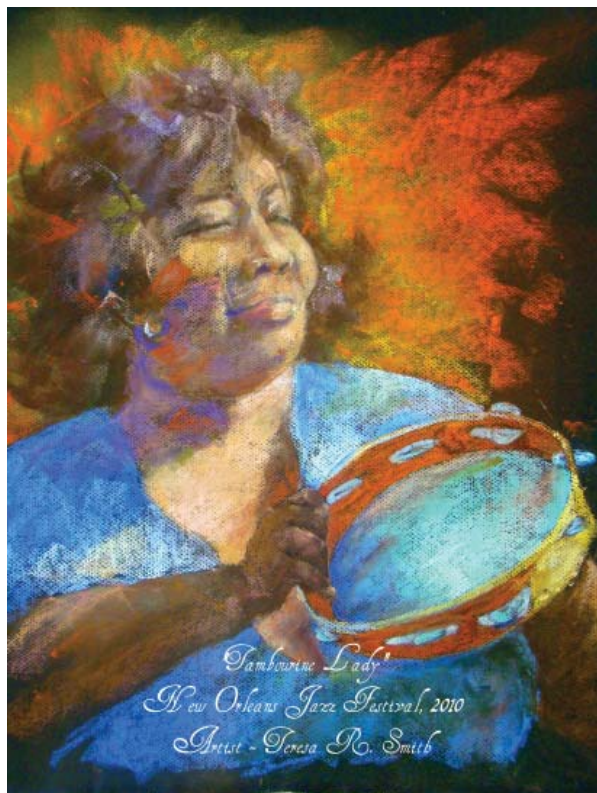
(continues to next page)

and hanging on my walls at home. I've had those prints for many, many years and I really think that has been the catalyst for my love of pastel portraiture.

My favorite pasttime when I'm not painting is reading, mostly historical novels. (If you haven't read *The Nightingale*, put it on your to-do list! I could NOT put it down.) Our favorite get-a-way vacation spots are the white, sandy beaches of southern Florida, mostly Destin and Marco Island. And we love, love, love New Orleans, as well.

I LOVE miniature dachshunds and always had them in my home when growing up as a child. We had two, but just last week, had to put our little aging 16-year-old dachshund, Norman, to sleep. Our little Molly Marie is still grieving for her older brother. So sad to watch her. (I've painted all of them, plus Steffie, who left this earth 6 years ago.)

One last thing.... I'm a HUGE Thunder fan! GO THUNDER!!!



Tambourine Lady



Sophie

Mike Wimmer Tips from the May Demo

Mike is chair of the art department at Oklahoma City University. He is illustrating a series of children's books by Frank Keating about past presidents. The first in the series is on George Washington. He resided at Mt. Vernon for over a week where he photographed, researched and sketched. When conceptual sketches were completed, he made a dummy of the book. He painted some onsite in Pennsylvania and then used models back in his studio. Historical re-enactment groups posed for the battle scenes. He bought a replica sculptural bust of George Washington for reference to create a likeness of him in his paintings.

TIPS FROM THE MAY DEMO:

- Stay spontaneous by stopping every 15 minutes or so, stepping back. Don't get caught up in the details.
- Never paint wrinkles, paint folds. Folds are character lines. Paint the best self.
- Best to do portraits at least the size of a fist. Smaller is very difficult. Bigger than life size would be best.
- All processes are measurements — harder or softer, warmer or cooler.
- Work dark to light and vague to specific.
- Bring everything up together, leave details until the last.
- Don't finish one area way ahead of another.
- Paint teeth larger than normal then paint the lips on top of them.
- Value is more important than color.
- Likes ivory black because it mixes well with other colors.
- A mixture of white (zinc or titanium), yellow ochre, cadmium red light or vermillion and black (ivory black) make great skin tones.



Upcoming Events

Desmond O'Hagan Workshop: "Interpreting Light"

Saturday, October 10 & Sunday, October 11th, 9:00 am – 4:30 pm

\$250 Members / \$295.00 Non-Members

Discussions, demo, slide presentation and lecture on painting in pastels emphasizing "Interpreting Light" in landscapes, figurative, still lifes and interiors.

Contact Pam Brewer, brewer1147@aol.com, 405.728.1960 (can leave message)

Jude Tolar Solo Art Show / Sale

Come to my solo art show/sale at Peck's Lodge on Campus Corner in Stillwater. The upstairs of this historic building has been renovated/restored, with a great galley for displaying art. I've been invited to be the first artist to do so.

This will be an extensive show and sale of my pastel paintings. I'll have both framed and unframed pieces,

from still lifes and floral portraits to landscapes. There will even be some paintings from my summer trip to Provence in France.

The show opens with a reception Friday, October 9, 6–9 pm. It continues Saturday, October 10, 10–4 pm and concludes Sunday, October 11, noon–3 pm. Upstairs at Peck's Lodge, 227 S. Knoblock, Stillwater, OK.

Jude Tolar Workshop: Art Under Glass

Come to my workshop, Art Under Glass, a Master Class Workshop at the Conservatory for Classical Art, 12 E. Burton Place, Edmond, OK. A three-day pastel workshop at Leslie Lienau's wonderful art venue.

We'll work from life to paint glass and other reflective subject matter. Join me for painting, seeing and art fun. Friday–Sunday, November 6–8, 9–4 pm. For information or to register: <http://www.classicalart.org/workshops.html>.

Dues are due!

The OPS members listed below have paid their dues for 2015-2016.

If your name isn't on this list and you wish to renew your membership,

please contact Janie Schmitz, janieops@sbcglobal.net,

to make payment arrangements or you can pay her during the September meeting.

Linda Battles
Patty Brandley
Pam Brewer
Kathy Burns
Kay Gamble
Debbie Gauger

William Henry
Jan Hutchinson
Lindel Hutson
Jimi Layman
Sue Ann Rodgers

Janie Schmitz
Gary Sharp
Teresa Smith
Judy Tolar
Ronda Zenker

*We need two snack providers for our
September, October & November meetings.
Let Lindel or Jimi know if you're interested.*

*See you on Monday, September 14, 6:30 p.m. at the
Will Rogers Garden Center, 3400 NW 36th, Oklahoma City!*