

## February OPS Meeting to Feature Portrait Demo by Mitsuno Reedy

Mitsuno Ishii Reedy began her career in mid-1970's painting portraits, still lifes, and landscapes for collectors throughout the United States. She has studied with notable pastel artists Albert Handell and Daniel Greene, and oil painters John Howard Sanden and David Leffel. She was elected a full member of Pastel Society of America in 1978, an associate member of the Pastel Society of Japan (Gendai Pastel Kyokai) in 2001, has been listed in Who's Who in the South and Southwest and Who's Who in American Art.



Her works have been included in the publications *The Best of Oil Painting*, *The Best of Pastels*, *Floral Inspirations*, *Portrait Inspirations*, *The Best of Pastels II*, and *Pastel Artist International* magazine. She was featured in *Nichols Hills News*, Oklahoma City (Feb. '02) and *Focus Santa Fe*, Santa Fe, New Mexico (Jun/Jul '95) Reedy's oil portrait of Federal District Judge Wayne Alley received recognition in the Portrait Society of America's 2001 International Portrait Competition held in Chicago, Illinois.

She also enjoys plein-air paintings, as well as still life paintings and figure studies in oil, pastel and Conte à Conte pencil.



### In This Issue

President's Message – Page 2

Tips from January Meeting – Page 4

Upcoming Events and Workshops – Page 6

# Message from OPS President Lindel Hutson



Portrait artist Mitsuno Reedy returns to OPS for this month's demonstration. Mitsuno is one of the more notable portrait artists in the country and we're lucky to have her with us again and as a member of OPS. This is at 6:30 p.m. Monday at the Dennis Parker Art Academy, 12120 Warwick Drive, in Oklahoma City.

Mitsuno is a native of Osaka, Japan. Fifty years ago this past June, she swore allegiance to this country and became a U.S. citizen. In May 2016 she was in the same courtroom, surrounded by her own artwork, for the portrait unveiling of former Chief Judge Vicki Miles-LaGrange. Her commissioned portraits have also included corporate and civic leaders, college deans, doctors, military offices and families and children. She has done portraits of Oklahoma political leaders.

Mark your calendar for March 13 and a demonstration by another favorite artist, Clive Tyler. Clive will be in town for a two-day workshop prior to the Monday night meeting.

In April, local artist Dale Martin, who had to cancel his demonstration for us last fall, will be our guest artist.

This seems to be the beginning of the workshop season. Besides Clive Tyler, there are a few others upcoming.

OPS member Jude Tolar has a workshop, "See the Light," Feb. 17-18 at the Stillwater Multi-Arts Center. For those who took this workshop last August, Jude says to consider this one to be "See the Light, Part II." For more information contact the arts center at 405-747-8084. She has a workshop, "Introduction to Pastels," set for May 2-3 in Muskogee.

A workshop "Drawing the Portrait in Pastel with Susan Lyon" is set for June 5-8 at the National Cowboy and Western Heritage Museum. This is just before the Prix de West. For more information: <https://store.nationalcowboymuseum.org/about/classes-workshops/drawing-the-portrait-in-pastel/>

We have changed the dues structure to put it on a September-September time table. Dues for 2016 were due in May of 2016. The dues for 2017 will be from September 2017 to September 2018. OPS dues are \$35 per year and enable us to provide the monthly programs and to pay rental for the meeting place.

***See you on Monday, February 13th, 6:30 p.m.  
at Dennis Parker's Art Studio, 12120 Warwick Drive, Oklahoma City!***

# Tips from January Program

## Presented by Gary Sharp & Jan Hutchinson

Kudos to Gary Sharp and Jan Hutchinson for putting together such an excellent program for our January OPS meeting. They came equipped with a variety of pastel grounds and several surfaces to apply them to. Here is the information from the handout.

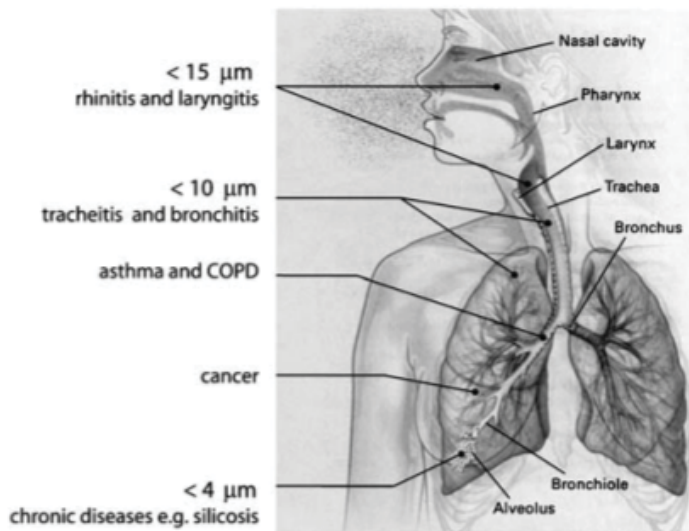
### Use of Various Pastel Grounds

Pumice 4F  
Pumice 3F  
Aluminum Oxide 500 grit  
Marble Dust

Rottenstone  
Art Spectrum Colorfix Primer  
Golden Fine Pumice Gel  
Liquitex Clear Gesso

### Health Effects

Silicosis is the main health concern with these products. There are 14 different forms of crystalline silica depending upon the temperature of formation. Quartz is the well know type and is the second most common mineral in the world.



Silicosis is a fibrosis reaction to the deposition of silica dust into the lungs. The dust has to be less than 10 micrometers in diameter in order to get down into the lungs and less than 4  $\mu\text{m}$  to reach the alveoli where it can cause silicosis. Lung cancer is also associated with this disease. The most common reaction is as a respiratory irritant at the time or shortly after exposure. Silicosis develops with long standing exposure to the dust. Non-respiratory silica has no health effects.

Many of these grounds contain silica based crystallites. Most of these products have little danger as they are either not in a dust form or the size is not small enough to be respirable. Good protective practices are recommended which include minimizing exposure through a dust mask and a well vented area.

Nuisance dust is solids that have little harmful effect on the lungs and do not produce significant disease or harmful effect when exposures are kept under reasonable control. Think smog if small.

### Particle size

Particle size has a number of different measurements; most common are Grit, Micron and Mesh. The trouble is different countries have different standards. Also the amount of product and the deviation from the size varies. These are reporting average size.

*(continues to next page)*

CAMI (USA) belt and paper grits	JIS (Japan) Waterstones	Average grit size in microns	Equivalent Mesh	
220		60		Flour
320	360	36	500	
400		23		
500		20		
600	800	16		FFF
700	1000	14		
800		12		FFFF
1000		9	1,800	
		5	4,500	
1500	4000	3	8,000	
		2.5	9,000	
	8000	1.2		
2000		1	14,000	

### **Pumice**

Pumice is volcanic rock that has both vesicular formations and microvesicular bubbles which makes the rock rough. It can vary in color from white to black depending on the trace minerals. It is mostly SiO<sub>2</sub> (Quartz) 72% and oxides MxO<sub>y</sub> (M=Al, Ca, Mg + other minor metal oxides bound with SiO<sub>2</sub>). Commonly found in a number of products such as toothpaste, Lava soap, and cosmetic products. Not considered toxic unless in a dust form; which is only during manufacturing.

### **Rottenstone (Tripoli)**

Is a fine powdered porous rock containing limestone mixed with other earth, including silica, and carbon black. It has different size labels which can be colored and not standardized. It is usually used for polishing following pumice powder. It is found in wood working, auto detailing, jewelry, and other buffing processes. Same exposure issues with silica. Carbon Black has possible carcinogenic properties.

### **Aluminum Oxide**

Aluminum Oxide Al<sub>2</sub>O<sub>3</sub>, Has several different crystalline forms. Forms vary from sanding abrasives to gemstones such as ruby and sapphire. The type used for grounds is the sanding abrasive form. It is very hard and has very sharp edges microscopically.

### **Marble Dust**

Marble dust is a crystalline form of calcium carbonate (CaCO<sub>3</sub>); essentially a different form of limestone. It is ground to a controlled particle size. It is supposed to have a softer and smoother particle. It is regulated as a nuisance dust. Possibly 11 microns in size (varies)

*(continues to next page)*

### **Art Spectrum Colorfix Primer**

Contains Mica (Silicate) and calcite (Marble dust) of proprietary sizes.

### **Golden Pumice Gel**

It contains Pumice of unknown size. It is thick and intended for acrylic impasto type techniques. Most recommend dilution of 20% plus for workability making pastel grounds.

### **Liquitex Gesso**

No listings of contents on the Material Safety Data Sheet (MSDS) since all are below hazard level. Most gessos are made up primarily of marble dust or chalk (also a form of  $\text{CaCO}_3$ ) and acrylics.



# Upcoming Events & Workshops

**IAPS 2017 Convention:** Registration for the 2017 IAPS Convention in Albuquerque opens on October 11. For a preview of the convention, go to [http://www.iapspastel.org/convention17\\_preview.php](http://www.iapspastel.org/convention17_preview.php).

**Marla Baggetta – PSA, IAPS, MC**

June 9, 2017 – “Navigating Your Trouble Zones”

June 10, 2017 – “Poems Not Novels”

Albuquerque, New Mexico. Contact IAPS for information.

**Doug Dawson – PSA, Master Pastelist, PSA Hall of Fame**

June 10, 2017 – “Working with Color Thumbnails,”

Albuquerque, New Mexico. Contact Susan Webster,

[susanwebster@verizon.net](mailto:susanwebster@verizon.net).

August 7-12, 2017, Cloudcroft, New Mexico. Contact Jan Rasch, 575/491-7208.

**Jan Evenhus – PSA-MP, NPS-DP, IAPS-MC, PSWC**

May 2017, St. Louis, Missouri; June 2017, Albuquerque,

New Mexico; October 2017, Dallas, Texas – “The Beauty of Perfection”

**Albert Handel**

March 12-18, 2017, Sedona, Arizona

April 24-28, 2017, Bastrop, Texas

June 6-11, 2017, IAPS, Albuquerque, New Mexico

For information, call 505/983-8373, [alberthandel@msn.com](mailto:alberthandel@msn.com) or [www.alberthandel.com](http://www.alberthandel.com).

**Barbara Jaenicke, PSA, IAPS/MC, AIS, OPA**

June 8-11, 2017, IAPS, Albuquerque, New Mexico

Demos – June 8 & 9; Workshop – June 11

**Mike Mahon – PSA, PAPNM, PSNM, APA**

March 30–April 1, Weatherford, Texas (Portrait)

For information, call 505/795-4639, [www.mmahon.com](http://www.mmahon.com)

## Call for Entries

**Arizona Pastel Artists’ Association Open National Show** in Sedona, Arizona, April 13-26, 2017. \$5,000 in cash and merchandise awards. Judge: Kim Lordier; Jurors: Lorenzo Chavez, Terri Ford. Show contact: Peggy Orbon, [m.orbon@cox.net](mailto:m.orbon@cox.net). Prospectus and registration online at [apaa.wildapricot.org](http://apaa.wildapricot.org).

**The Pastel Society of Colorado’s 13th Annual Mile**

**High National Pastel Exhibition**, July 6-August 20, 2017

in Denver, CO. Judge: Tony Allain, PS, PSA, IAPS, MC.

\$4,000 in awards including \$1,200 Best of Show plus thousands more in merchandise. Download full prospectus at <http://pastelsocietyofcolorado.org/shows.php>. Entry fee: up

to 3 paintings, \$35; PSC members, \$10 per entry after that up to 5 total; \$45 non-members, \$10 per entry after that up to 5 total. Contact [nancy@nancywelterfineart.com](mailto:nancy@nancywelterfineart.com).

**Pastel Society of America. The 45th Annual Open Juried**

**Exhibition:** Enduring Brilliance! at the National Arts Club, New York City, September 5-30, 2017. Soft pastels only.

More than \$40,000 in awards. Online digital entries only.

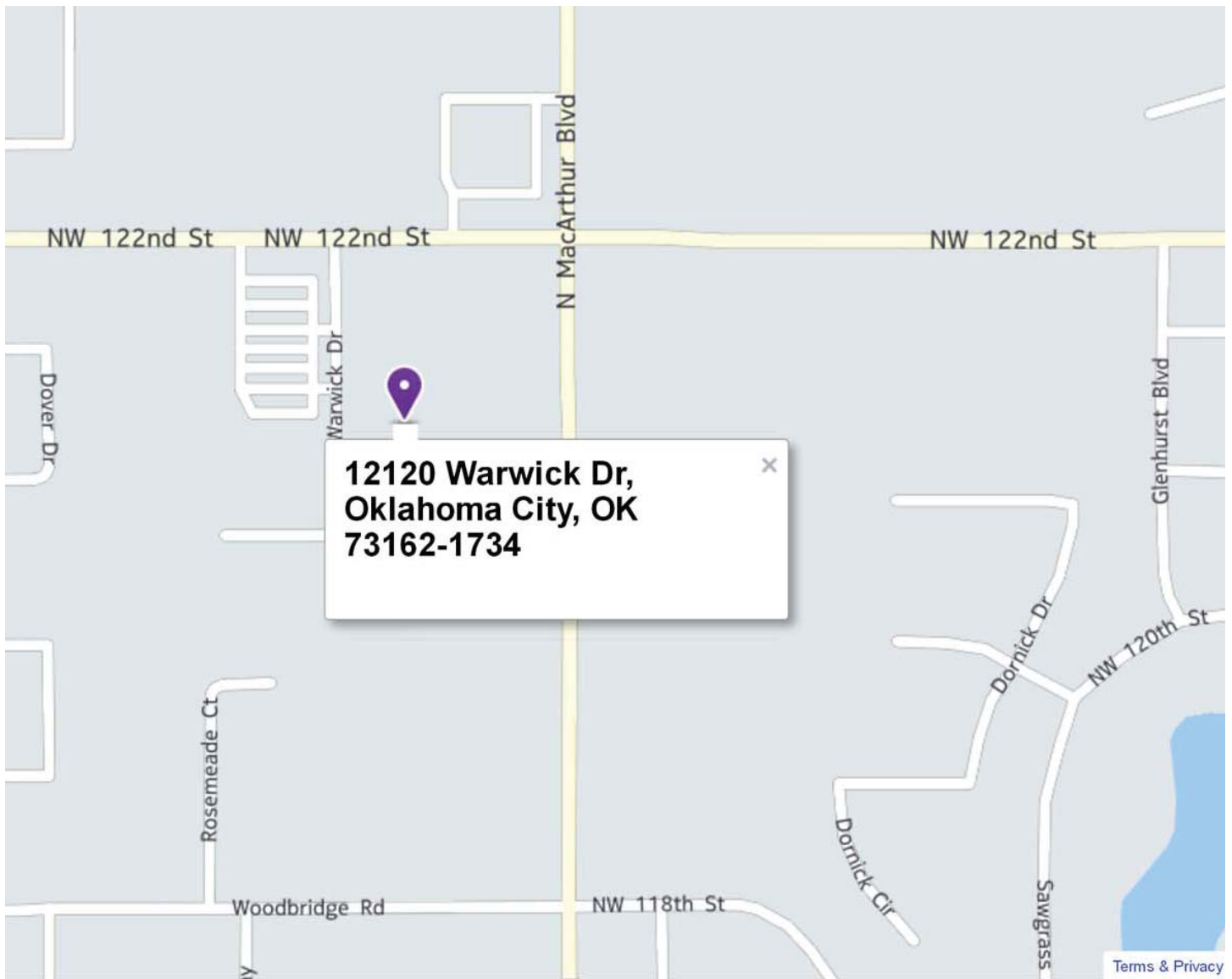
Download prospectus after March 15th at [www.pastelsocietyofamerica.org](http://www.pastelsocietyofamerica.org) or send SASE (#10) to Pastel Society of America, 15 Gramercy Park South, New York, NY 10003.

Info 212/533-6931 or [psaoffice@pastelsocietyofamerica.org](mailto:psaoffice@pastelsocietyofamerica.org).



*We need two volunteers to provide refreshments for  
February, March, April & May.  
Let Lindel or Jimi know if you're interested.*

**See you on Monday, February 13th, 6:30 p.m.  
at Dennis Parker’s Art Studio, 12120 Warwick Drive!**



**Dennis Parker Art Studio, 12120 Warwick Drive, Oklahoma City.**