

## February Program Features Portrait Demo by Mitsuno Reedy

A native of Osaka, Japan, Mitsuno Ishii Reedy began her career in mid-1970's painting portraits, still lifes, and landscapes for collectors throughout the United States. She has studied with notable pastel artists Albert Handell and Daniel Greene, and oil painters John Howard Sanden and David Leffel. She was elected a full member of Pastel Society of America in 1978, an associate member of the Pastel Society of Japan (Gendai Pastel Kyokai) in 2001, has been listed in Who's Who in the South and Southwest and Who's Who in American Art.

Her works were included in the publications *The Best of Oil Painting*, *The Best of Pastels*, *Floral Inspirations*, *Portrait Inspirations*, *The Best of Pastels II*, and *Pastel Artist International* magazine. She was featured in *Nichols Hills News*, Oklahoma City (Feb. '02) and *Focus Santa Fe*, Santa Fe, New Mexico (Jun/Jul '95) Reedy's oil portrait of Federal District Judge Wayne Alley received recognition in the Portrait Society of America's 2001 International Portrait Competition held in Chicago, Illinois.

Reedy's commissioned portraits include corporate and civic leaders, college deans, doctors, military officers, and family and children's portraits. Her portraits of the famous opera tenor Luciano Pavarotti were presented to him in 1982 when Mr. Pavarotti gave the first of several charity concerts.

She also enjoys plein-air paintings, as well as still life paintings and figure studies in oil, pastel and Cente à Conte pencil.

Reedy has also had the honor of being named a Marquis Who's Who artist.



### In This Issue

Member Profile – Page 2

Tips from January  
Program – Page 4

Upcoming Events  
& Workshops – Page 5



# Spotlight on OPS Member Jan Chesler

I have no formal education in art. My background includes a bachelor's degree in business management with an emphasis in math (through calculus III), and a 30-year career at AT&T Yellow Pages. I traveled a lot in my work and didn't take much time for art, although I always wanted to learn to paint and I dabbled in watercolors and pastels occasionally over the years on my own in my 40's. I took an early buy-out from AT&T about 10 years ago at the age of 50 and since then I finally took a few short classes in acrylics, charcoals, and pastels. In the last year I have signed up for my first ever workshops in oils and pastels. I feel there is much to learn and I am behind since I got such a late start, but I am enjoying the learning process.

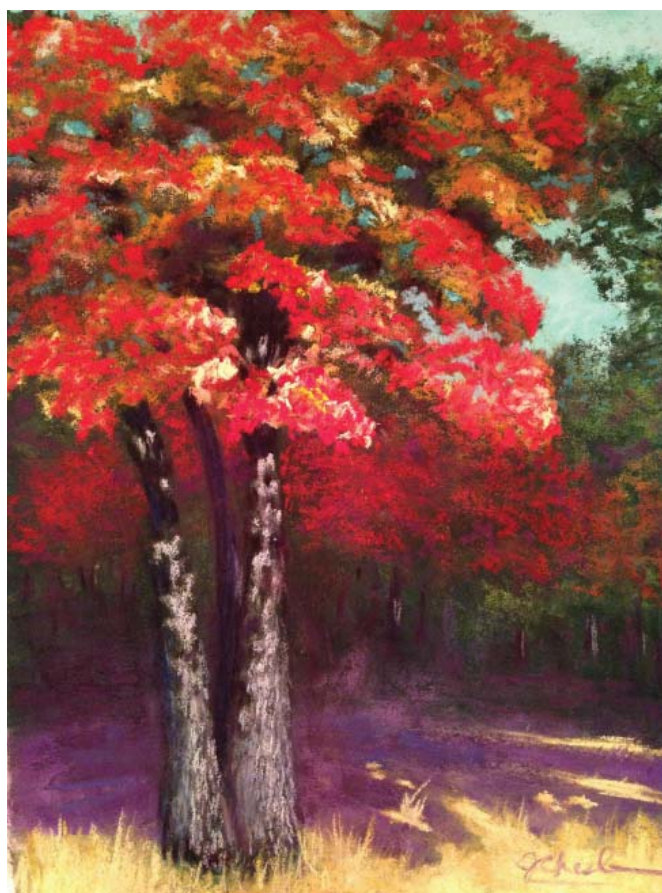
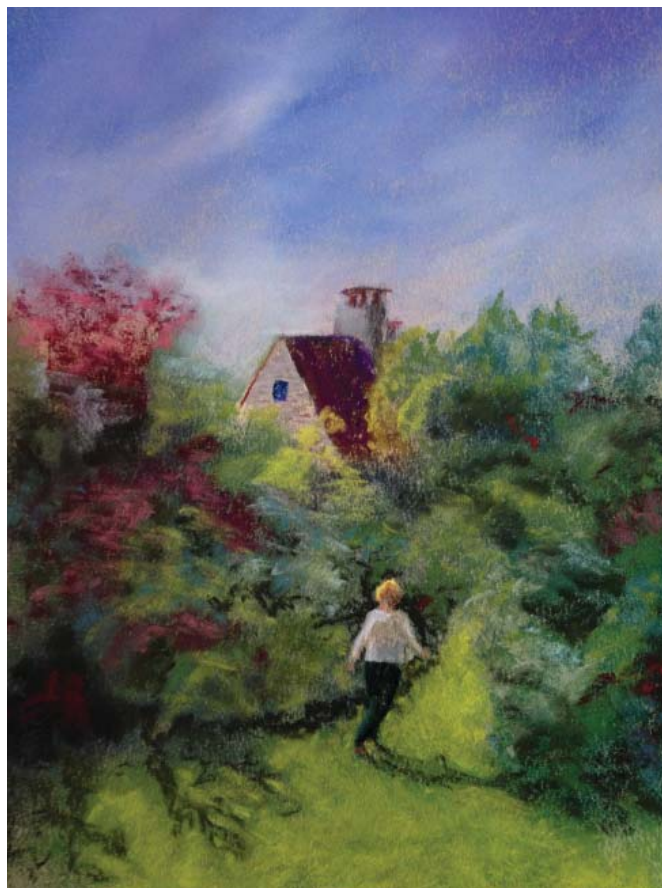
My favorite medium is pastels, because of their beautiful rich colors and because I get instant color without having to mix pigments, plus I don't have to put them away and clean brushes after every session like with oils. But also I love oil painting, because they are so rich in color and so workable over a long time. Plus finished oil paintings are less fragile than pastels. I usually have at least one oil painting and one pastel painting going all the time, although I don't paint daily. I played with acrylics for a while but once I got into oils I put my acrylics away.

*(continues to next page)*



I have lived in Oklahoma most of my life with a few years spent in Texas and Missouri. I have been married 35 years to Don Chesler, a wonderful psychiatrist who works here in Oklahoma City. We have no kids but are the proud adopted parents of three dogs (a rescue bichon frise and two cavalier king charles spaniels), a cat, a pastel blue lovebird, and a goldfish. It is a zoo at my house!

My husband and I love to travel. We have visited 38 countries and take several trips a year. Our travels give me lots of painting inspiration. Plus I am an avid gardener and nature lover, and I find inspiration here on our 1-1/2 acre property. I paint all sorts of things, but my favorites are probably florals, landscapes, and wildlife. My results are always better if I'm really drawn to my subject either emotionally or by beautiful light in the scene. I hope to take more workshops in oils and pastels in 2019.



# Tips from Rick McClure from the OPS January Meeting

- Use thirds grid system to place the focal area(s).
- Look for overlapping shapes. It creates dimension & depth.
- Look for interesting shapes & a variety of shapes. Your brain wants to organize, but resist that.
- Establish dominate & subordinate elements. A lot of something & a little of other things. This applies to color, composition, temperature, value, etc.
- Let your painting strongly lean in one direction.
- Use your own personality in your art. Paint to your own style. Develop your craft.
- Start big, end small.
- Establish a clear understanding of the following:
  - from big to small
  - from loose to controlled
  - from thin to fat
  - from wet to dry
  - from fast to slow (block in quickly, then slow down to be precise)
  - from simple to complex
  - from shoulder to wrist

Be loose in the beginning by painting from the shoulder. Mid-painting, paint from the elbow for more control. At end, paint from the wrist slowly & carefully.

First stand in your thinking box, figure out a plan. Then step into your doing box and do it.

Important painting principles. You must know these principles.

- The properties of paint
  - Value = Dark, medium or light
  - Hue = Color
  - Temperature = Warm/Cool
  - Intensity = Bright/DullEvery stroke must use an understanding of these properties.
- The 5 types of light
  - Shadow
  - Light
  - Dark Accent
  - Light Accent
  - Reflected LightIn the distance, you don't need as much information.

## CONTRAST

Look for places to provide contrast, *small* amounts of contrast.

In - Color = Compliments - Red/Green, Orange/Blue, etc.

In - Value = Dark/Light

In - Shape = Big/Small

We often have too many small shapes in a painting.

In - Movement = Busy/Calm

In - Intensity = Bright/Dull

In - Temperature = Warm/Cool

In - Texture = Thick/Thin

In - Design = Dominate/Subordinate

In - Edges = Hard/Soft

You must know the law of atmospherics: The further away something is, the grayer, cooler, less defined it is.

Grays are very important.

## THE 4 PLANES OF LIGHT (IN TOPLIGHT)

(John Carlson)

Sky = Lightest

Horizontal = Somewhat darker than sky plane

Sloping = Somewhat darker than horizontal plane

Vertical = Darker than sloping place

The 4 planes of light help give a painting its depth.

## VALUE INTEGRITY OF MASSES

Masses in shadow must not contain value above medium value.

Masses in light must not contain values below medium value.

## FOCAL AREA

Contains the highest degree of contrast elements.

## PAINT LIKE THE EYE SEES

Reduce information and contrast elements as you move away from the focal area. The periphery should be quieter, less contrast.

## HARMONY

Maintain harmony in color and key throughout the painting. Using dominate and subordinate will give you harmony.

Temp or value creates soft edge. Technique creates firm edge.

## Upcoming Workshop

---

**Dale Martin Workshop:** OPS will present a one-day Dale Martin Workshop on Saturday, February 16, 9:00 a.m. – 4:00 p.m. at the Scout Hut. Fee is \$50. If you are interested in taking the workshop, please contact Pam Brewer, [brewer1147@aol.com](mailto:brewer1147@aol.com). The Scout Hut is located behind St. David's Episcopal Church at 3333 North Meridian in Oklahoma City.

## Member News

---

### Jude Tolar:

- I participated in the Final Friday Art Crawl in downtown Stillwater Jan. 25, by painting in the Guild Gallery at the Community Center. My efforts ended up on the front page of the Stillwater Newspress the next morning, in a color photo and nice caption.
- I'll teach Portraits for Teens at Prairie Art Center, Stillwater, Feb. 26 and 28, 6-8:30 pm. We'll create a portrait of a live model, using graphite. For info or to register: [artscenter@okstate.edu](mailto:artscenter@okstate.edu).
- I'll also teach Art Under Glass, a two-day pastel workshop at Prairie Arts Center, Stillwater, March 29-30. Learn to render glass subject matter (it's easier than you think.) Same contact info.

We also want to share news of what you've been up to so please email your information to [jimiathome@cox.net](mailto:jimiathome@cox.net).

## Current & Upcoming Exhibits

---

### Oklahoma City Museum of Art:

- **Masterworks of British Painting**, runs through Feb. 24, 2019
- **Off the Wall: One Hundred Years of Sculpture**, runs through May 12, 2019
- **Ansel Adams and the Photographers of the West**, runs through May 26, 2019
- **Van Gogh, Monet, Degas, The Mellon Collection of French Art from the Virginia Museum of Fine Arts**, June 22 – Sept. 22, 2019

### National Cowboy Hall of Fame and Western Heritage Center:

- **American Indian Artists: 20th Century Masters**, runs through May 12, 2019
- **Horseplay**, runs through July 14, 2019
- **Cowboys in Khaki**, runs through May 12, 2019
- **The Bison Exhibit**, runs through May 12, 2019

### Gilcrease Museum, Tulsa:

- **Americans All!**, ongoing
- **The Chisholm Kid: Lone Fighter for Justice for All**

## Dues are Due!

---

Our membership term runs January through December each year. To join OPS or to renew your membership, mail a check in the amount of \$35 to Oklahoma Pastel Society, P.O. Box 75696, Oklahoma City, OK 73147. Or you could just give your check to OPS Treasurer Janie Schmitz at the next meeting.



*Thanks to Jan Chesler and Teresa Smith for providing refreshments for our February meeting. We need volunteers for March, April & May. Let Lindel or Jimi know if you're interested.*



**See you on Monday, February 11, 6:30 p.m.  
at Will Rogers Garden Center, 3400 NW 36th Street, Oklahoma City.**